

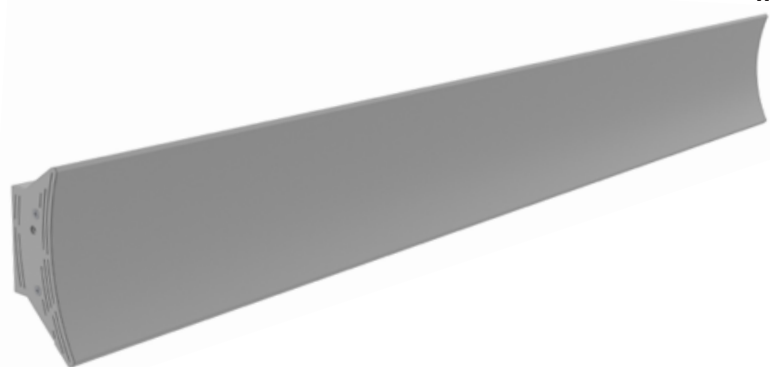
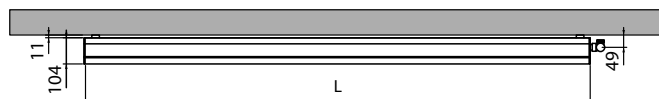
PARENTHESIS HORIZONTAL



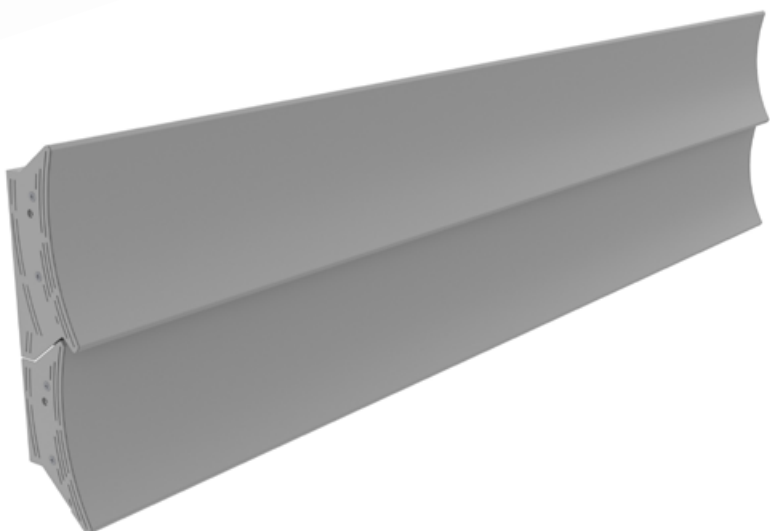
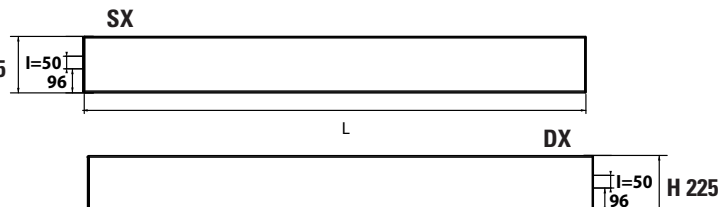
design by Marco Piva



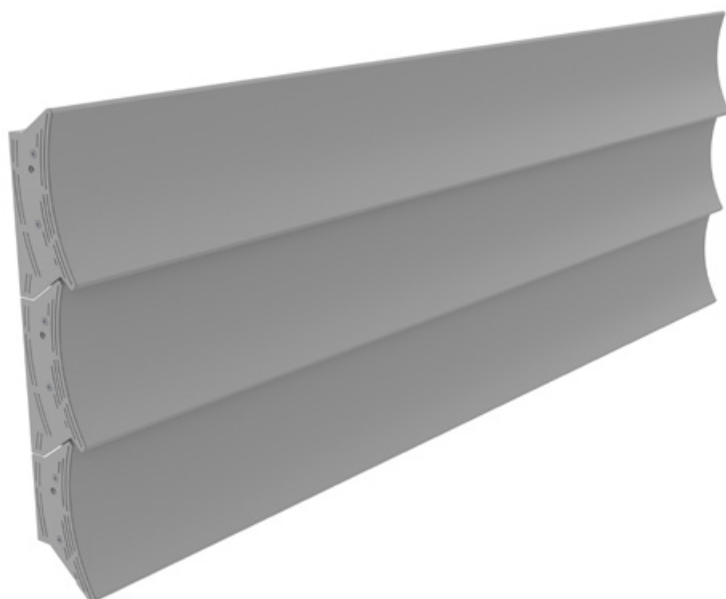
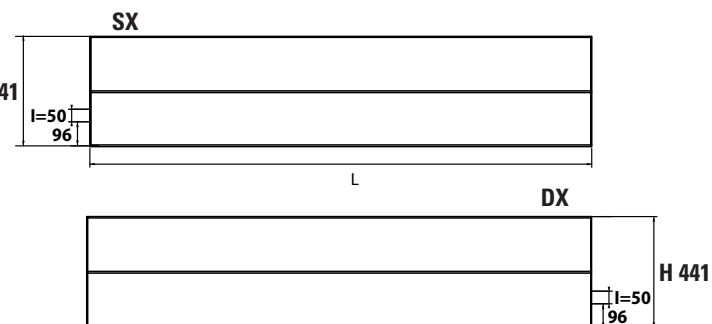
Interasse dal centro foro al muro 49 mm.
 Distance between hole center and wall 49 mm.
 Distance du centre du trou au mur 49 mm.
 Abstand zwischen Lochmitte und Wand 49 mm.
 Distancia entre el centro del agujero y el muro 49 mm.
 Расстояние между центром отверстия и стеной - 49 мм.



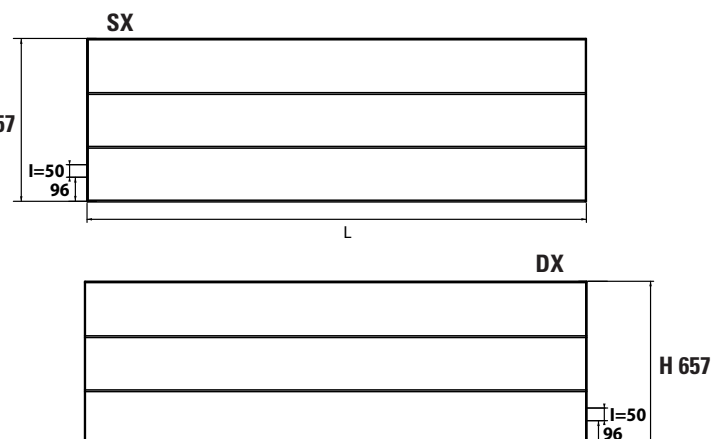
H 225



H 441



H 657



COLOURS p./S. 200

$$\text{Watt} = \text{Kcal/h} \div 0,860$$

$$\text{Kcal/h} = \text{Watt} \times 0,860$$

codice allaccio SX code connection SX code branchement SX Artikel Nr. anschluess SX codigo empalme SX код соединения SX	codice allaccio DX code connection DX code branchement DX Artikel Nr. anschluess DX codigo empalme DX код соединения DX	larghezza	altezza	interasse distance between bars entraxe Achsabstand distancia entre centros межцентровое расстояние	peso weight poids Gewicht peso вес	output	output	output
		width	height			75/65-20	75/65-20	75/65-20
		largeur	hauteur			watt*	watt*	watt*
Breite	Höhe							
ancho	altura	L mm	H mm	I mm	Kg	Δt50	Δt30	Δt26
ширина	высота							
FPARSX1201...	FPARDX1201...	1206	225	50	9,5	320	168	140
FPARSX1202...	FPARDX1202...	1206	441	50	20	640	338	282
FPARSX1203...	FPARDX1203...	1206	657	50	29	960	508	423
FPARSX1501...	FPARDX1501...	1506	225	50	11,4	368	194	162
FPARSX1502...	FPARDX1502...	1506	441	50	23,5	736	388	323
FPARSX1503...	FPARDX1503...	1506	657	50	35	1104	581	484
FPARSX1801...	FPARDX1801...	1806	225	50	13,5	440	232	193
FPARSX1802...	FPARDX1802...	1806	441	50	27,5	880	463	386
FPARSX1803...	FPARDX1803...	1806	657	50	40,5	1320	695	579
FPARSX2001...	FPARDX2001...	2006	225	50	15	530	280	233
FPARSX2001...	FPARDX2001...	2006	441	50	30	1060	561	468
FPARSX2001...	FPARDX2001...	2006	657	50	45	1590	841	701

- * I watt hanno valori provvisori in attesa di certificazione Δt50.
- * The watt values are not definitive awaiting for Δt50 certification.
- * Le nombre de Watts est une valeur indiquée à titre provisoire dans l'attente de la certification Δt50.
- * Die Wattwerte sind vorläufig bis zur Δt50 Zertifizierung.
- * Los Varios tienen valores provisionales en espera de la certificación Δt50.
- * До получения сертификата Δt50 приводится предварительное значение мощности в ваттах.

Massima pressione di esercizio: 8 bar
Material: Alluminio

Maximum working pressure: 8 bar.
Material: aluminium

Pression d'exercice maximale: 8 bars
Matériel: aluminium

Maximaler Betriebsdruck: 8 bar
Material: Aluminium

Presion maxima de trabajo: 8 bar
Material: Aluminio

Максимальное рабочее давление – 8 бар
Материал – алюминий



NEW

